

CHECKLISTE - LIN20 KONSOLENLÖSUNGEN

Firma:

Bestell-Nr.

ANGABEN ZUM BECKEN

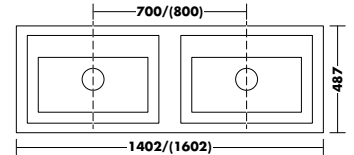
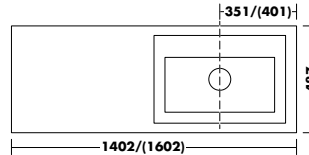
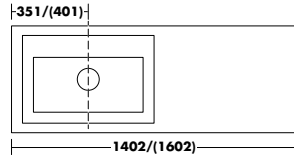
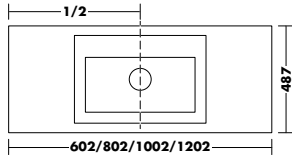
Hersteller / Serie:

Artikel-Nr.:

Becken-Datenblatt als Anlage

Becken mit Armaturbohrung

Becken ohne Armaturbohrung

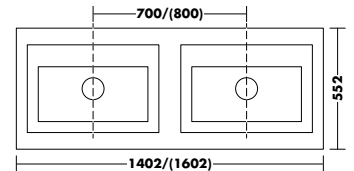
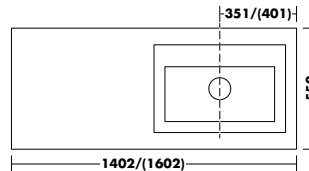
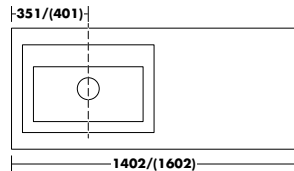
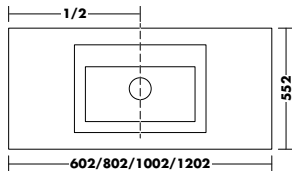


WXYH060/WXYH080/WXYH100/WXYH120
WWYI060/WWYI080/WWYI100/WWYI120
WWYJ060/WWYJ080/WWYJ100/WWYJ120

SGWE140 L / (SGWE160 L)
SGIF140 L / (SGIF160 L)
SGIG140 L / (SGIG160 L)

SGWE140 R / (SGWE160 R)
SGIF140 R / (SGIF160 R)
SGIG140 R / (SGIG160 R)

SGWG140 / (SGWG160)
SGIH140 / (SGIH160)
SGII140 / (SGII160)



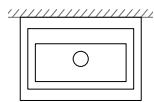
WXYI060/WXYI080/WXYI100/WXYI120
WXOD060/WXOD080/WXOD100/WXOD120
WXOE060/WXOE080/WXOE100/WXOE120

SGWF140 L / (SGWF160 L)
SGRA140 L / (SGRA160 L)
SGRB140 L / (SGRB160 L)

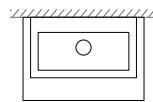
SGWF140 R / (SGWF160 R)
SGRA140 R / (SGRA160 R)
SGRB140 R / (SGRB160 R)

SGWH140 / (SGWH160)
SGRC140 / (SGRC160)
SGRD140 / (SGRD160)

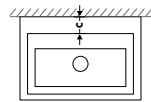
POSITION DES BECKENS VON DER WAND:



ausgemittelt



wandbündig



C Abstand Hinterkante Becken zu Wand
BITTE BEACHTEN: Bei Standarmatur hinter Becken
Mindestabstand zur Wand 110 mm.

ANGABEN ZUR ARMATUR

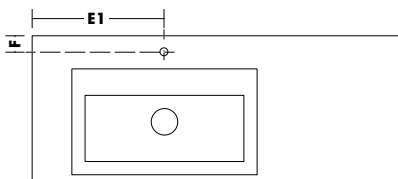
Standarmatur

Wandarmatur

Hersteller / Serie:

Artikel-Nr.:

Armatur-Datenblatt als Anlage

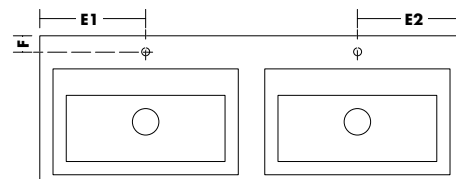


E1 Randabstand Standarmatur links:

mm

E2 Randabstand Standarmatur rechts:

mm

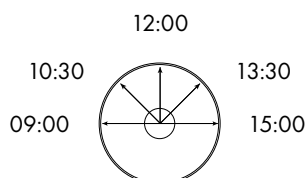


F Randabstand Tiefe Standarmatur:

mm

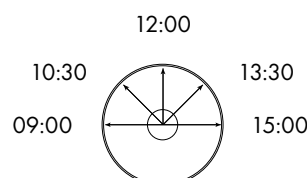
BITTE BEACHTEN: Mindestabstand zur Wand 60 mm.

ANGABEN ZUR STANDARMATUR BEI RUNDEN BECKEN



Position der Armatur ankreuzen
oder durch Uhrzeit angeben.
Uhrzeit:

ANGABEN ZUR STANDARMATUR BEI 2. RUNDEN BECKEN



Position der Armatur ankreuzen
oder durch Uhrzeit angeben.
Uhrzeit: